

DIAGRAMS

Trademarks:

Canon Inc.'s trademark, logos, product names, service marks and those trademark, logos, product names, service marks licensed to Canon Inc. by any of its affiliate or subsidiary are registered or unregistered marks of Canon Inc. or such affiliate or subsidiary in Japan and/or other countries.

Adobe, the Adobe logo, Acrobat, the Acrobat logo and Reader are either registered trademarks or trademarks of Adobe Systems Incorporated in the United States of America and/or other countries. All other trademarks, product names, service marks are generally either registered or unregistered marks of their respective owners.

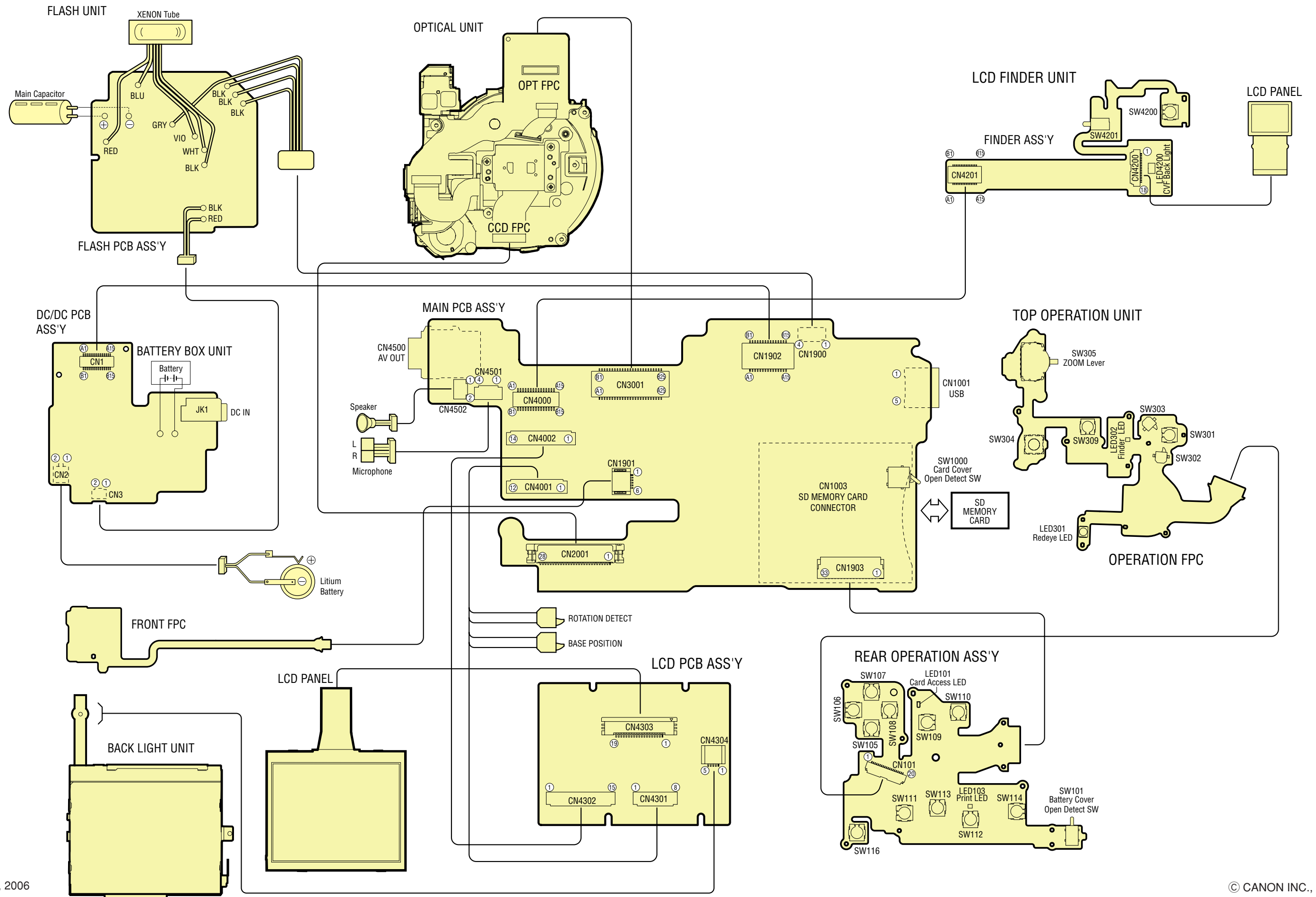
Copyright:

All copyrights in the content of this Service Manual are owned or controlled by Canon Inc. You are not permitted to copy, reproduce, download, modify, adapt or translate in any way the content of this Service Manual for any purpose other than the purpose contemplated herein without prior written consent of Canon Inc.

CONTENTS

1. INTERCONNECTION DIAGRAM
2. BLOCK DIAGRAMS
 - 2.1 OVERALL
 - 2.2 MAIN PCB ASS'Y (1/4)
 - 2.3 MAIN PCB ASS'Y (2/4)
 - 2.4 MAIN PCB ASS'Y (3/4)
 - 2.5 MAIN PCB ASS'Y (4/4)
 - 2.6 DC/DC PCB ASS'Y
 - 2.7 Abbreviation in Block Diagrams
3. P.C.B. DIAGRAMS
 - 3.1 MAIN PCB ASS'Y
 - 3.2 DC/DC PCB ASS'Y
 - 3.3 FLASH PCB ASS'Y
 - 3.4 OPT FPC
 - 3.5 LCB PCB ASS'Y
 - 3.6 REAR OPERATION ASS'Y
 - 3.7 TOP ASS'Y
 - 3.8 FINDER FPC
 - 3.9 FRONT FPC

1. INTERCONNECTION DIAGRAM



CONNECTORS

MAIN PCB ASS'Y

CN1001	
1	VBUS
2	D-
3	D+
4	Not Connected
5	UV_GND
6	CHA_GND
7	CHA_GND
8	CHA_GND
9	CHA_GND
CN1003	
1	CD/DAT3
2	CMD
3	VSS1
4	VDD
5	CLK
6	VSS2
7	DAT0
8	DAT1
9	DAT2
10	WP1
11	WP2(GND)
12	CD1
13	CD2(GND)
14	GND1
15	GND2
CN1900	
1	STRB_FLASH
2	/STRB_DONE
3	STRB_CHG
4	GND
CN1901	
1	GMD
2	MATSW5
3	MATSW6
4	MATCOM1
5	GND
6	GND
CN1902	
A1	VDD1-8.0
A2	VBATT
A3	VBATT
A4	GND
A5	GND
A6	GND
A7	VDD2-N8.0
A8	VDD1-1.2
A9	VDD1-1.2
A10	VDD1-2.5
A11	VDD1-2.5
A12	VDD1-3.3
A13	VDD1-3.3
A14	VDD1-3.3
A15	VDD1-3.3
B1	VDD1-8.0
B2	VBATT
B3	E20LAT
B4	GND
B5	GND
B6	GND
B7	VDD2-13.0
B8	VDD2-4.0
B9	E2LAT

B10	E1LAT
B11	LOAD_CK
B12	BATT_SENSE
B13	Litium VDD
B14	VDD1-3.3
B15	DC_JDET
CN1903	
1	MATCOM[3]
2	MATSW[6]
3	VDD1-3.3
4	SC_ACCESS_LED
5	MATSW[5]
6	M_GND
7	M_GND
8	PWR_OFF
9	REC_ON
10	PB_ON
11	GND
12	PWR_LED_GREEN
13	PWR_LED_ORANGE
14	VDD1-3.3
15	MATSW[4]
16	MATSW[3]
17	MATSW[2]
18	/SW1
19	GND
20	/SW2
21	MATSW[1]
22	MATCOM[4]
23	RED_EYE_CONT(K) Tally
24	GND
25	GND
26	MATCOM[2]
27	MATSW[7]
28	VDD0-3.3
29	VDD1-8.0
30	DIRECT_PRT_LED
31	GND
32	BAT_TEMP
33	BAT_COVER_DET
CN2001	
1	VOUT
2	VDD
3	GND
4	RG
5	H1B
6	H2B
7	GND
8	V8
9	V7B
10	V7A
11	V6
12	VHLD
13	V5B
14	V5A
15	V4
16	VST
17	V3B
18	V3A
19	V2
20	V1B
21	V1A
22	SUB
23	CSUB
24	GND

25	VL
26	GND
27	H1A
28	H2A
CN3001	
A1	AF_LED_A
A2	AF_LED_K
A3	USM_E1
A4	USM_K
A5	USM_COM
A6	USM_B+
A7	USM_A+
A8	USM_S
A9	USM_A-
A10	USM_B-
A11	USM_E2
A12	OPT_THM0
A13	OPT_THM1
A14	SK+
A15	SH-
A16	GND
A17	GND
A18	GND
A19	GND
A20	Y_HOUT+
A21	Y_HIN-
A22	Y_DRVA
A23	Y_DRVB
A24	P_DRVB
A25	P_DRVA
B1	IRIS_A-
B2	IRIS_B+
B3	IRIS_A+
B4	IRIS_B-
B5	AFRST_COM
B6	AFRST_E
B7	AFRST_K
B8	AF_A-
B9	AF_B+
B10	AF_A+
B11	AF_B-
B12	GND
B13	GND
B14	ZMPI_COM
B15	ZMPI_K
B16	ZMPI_E
B17	CCD_THM0
B18	CCD_THM1
B19	GND
B20	P_HIN+
B21	P_HOUT-
B22	P_HOUT+
B23	P_HIN-
B24	Y_HIN+
B25	Y_HOUT-
CN4000	
A1	R
A2	G
A3	CSH
A4	CKH2EV
A5	CKH1EV
A6	VSS
A7	GND
A8	GND
A9	STHEV
CN4501	
1	Left
2	MIC_GND_L
3	Right
4	MIC_GND_R
CN4502	
1	SP-
2	SP+

A10	GND
A11	GND
A12	GND
A13	VDD
A14	BL_ANODE
A15	BL_CATHODE
B1	MATSW3
B2	MATSW4
B3	MATCOM1
B4	GND
B5	GND
B6	GND
B7	B
B8	DSG
B9	COM
B10	CKV
B11	STV
B12	ENB
B13	CSV
B14	VBB
B15	DSD
CN4001	
1	CKH2
2	CKH1
3	HVDD
4	STH
5	VSS
6	CSH
7	G
8	GND
9	ROT_DET_COM
10	MATSW[2] GPIO[73]
11	BASE_POS_DET_COM
12	MATSW[1] GPIO[72]
CN4002	
1	R
2	B
3	DSG
4	DSD
5	SC
6	VBB
7	CSV
8	ENB
9	VVDD
10	STV
11	CKV
12	COM
13	BL_C
14	BL_ANODE
CN4500	
1	GND
2	AUDIO_L
3	VIDEO
4	GND_DET
5	PLUG_IN
6	AUDIO_R
CN4501	
1	Left
2	MIC_GND_L
3	Right
4	MIC_GND_R
CN4502	
1	SP-
2	SP+

CVF FPC

CN4200	
1	Not Connected
2	COM
3	CKV
4	STV
5	ENB
6	CSV
7	VBB
8	DSD
9	DSG
10	B
11	R
12	G
13	CSH
14	VDD
15	CKH2EV
16	CKH1EV
17	VSS
18	STHEV
CN4201	
A1	R
A2	G
A3	CSH
A4	CKH2EV
A5	CKH1EV
A6	VSS
A7	GND
A8	GND
A9	STHEV
A10	GND
A11	GND
A12	GND
A13	VDD
A14	BL_ANODE
A15	BL_CATHODE
B1	MATSW3
B2	MATSW4
B3	MATCOM1
B4	GND
B5	GND
B6	GND
B7	B
B8	DSG
B9	COM
B10	CKV
B11	STV
B12	ENB
B13	CSV
B14	VBB
B15	DSD

IS FPC

CN3901	
1	AFRST_E
2	AFRST_K
3	AFRST_COM
4	AF_A-
5	AF_B+
6	AF_A+
7	AF_B-

OPT FPC

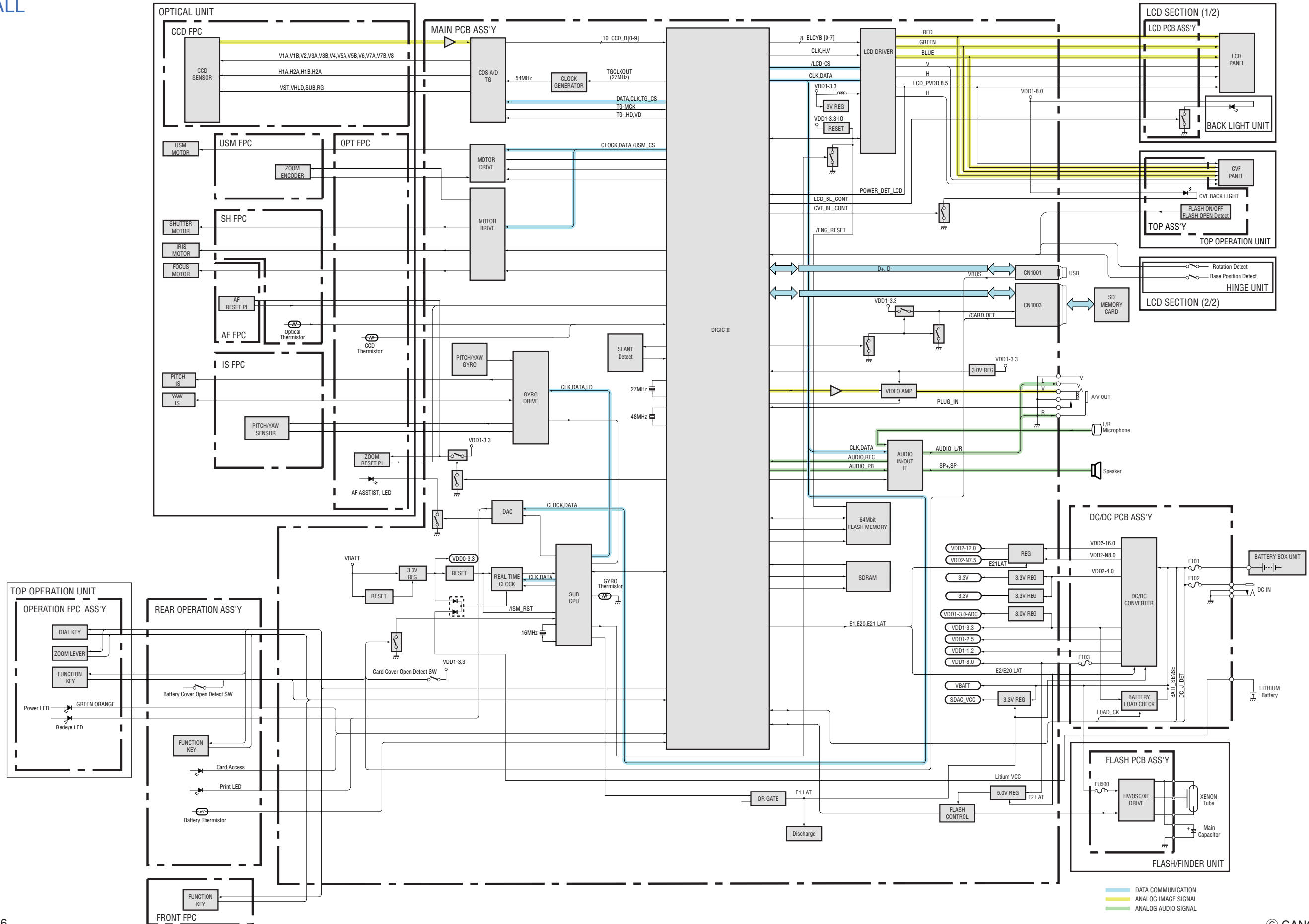
CN3841	
A1	AF_LED_A
A2	AF_LED_K
A3	USM_E1
A4	USM_K
A5	USM_COM
A6	USM_B+
A7	USM_A+
A8	USM_S
A9	USM_A-
A10	USM_B-
A11	USM_E2
A12	OPT_THM0
A13	OPT_THM1
A14	SH+
A15	SH-
A16	GND
A17	GND
A18	GND
A19	GND
A20	Y_HOUT+
A21	Y_HIN-
A22	Y_DRVA
A23	Y_DRVB
A24	P_DRVB
A25	P_DRVA
B1	IRIS_A-
B2	IRIS_B+
B3	IRIS_A+
B4	IRIS_B-
B5	AFRST_COM
B6	AFRST_E
B7	AFRST_K
B8	AF_A-
B9	AF_B+
B10	AF_A+
B11	AF_B-
B12	GND
B13	GND
B14	ZMRST_COM
B15	ZMRST_K
B16	ZMRST_E
B17	CCD_THM0
B18	CCD_THM1
B19	GND
B20	P_HIN+
B21	P_HOUT-
B22	P_HOUT+
B23	P_HIN-
B24	Y_HIN+
B25	Y_HOUT-
CN3842	
1	P_DRVA
2	P_DRVB
3	Y_DRVB
4	Y_DRVA
5	Y_HIN-
6	Y_HOUT+
7	Y_HOUT-
8	Y_HIN+
9	P_HIN-
10	P_HOUT+
11	P_HOUT-
12	P_HIN+

REAR OPERATION ASS'Y

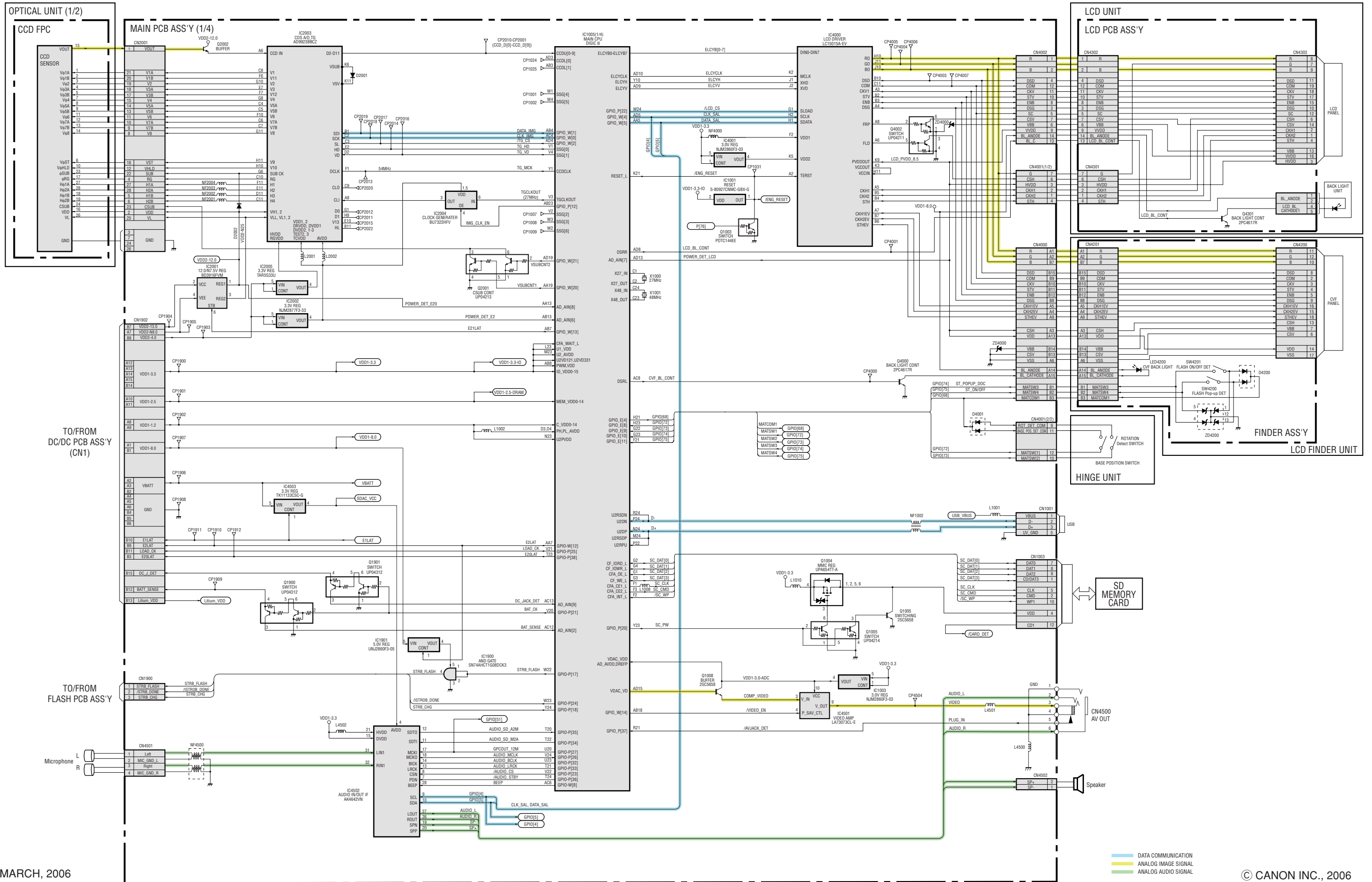
CN101	
1	PWR_OFF
2	REC_ON
3	PB_ON
4	GND
5	PWR_GREEN_LED
6	PWR_ORANGE_LED
7	VDD1-3.3
8	MATSW[4]
9	MATSW[3]
10	MATSW[2]
11	SW1
12	GND
13	SW2
14	MATSW[1]
15	MATCOM[4]
16	VDD1-8.0
17	RED_EYE_CONT
18	MATCOM[2]
19	VDD0-3.3
20	ZMPOS[3]

2. BLOCK DIAGRAMS

2.1 OVERALL

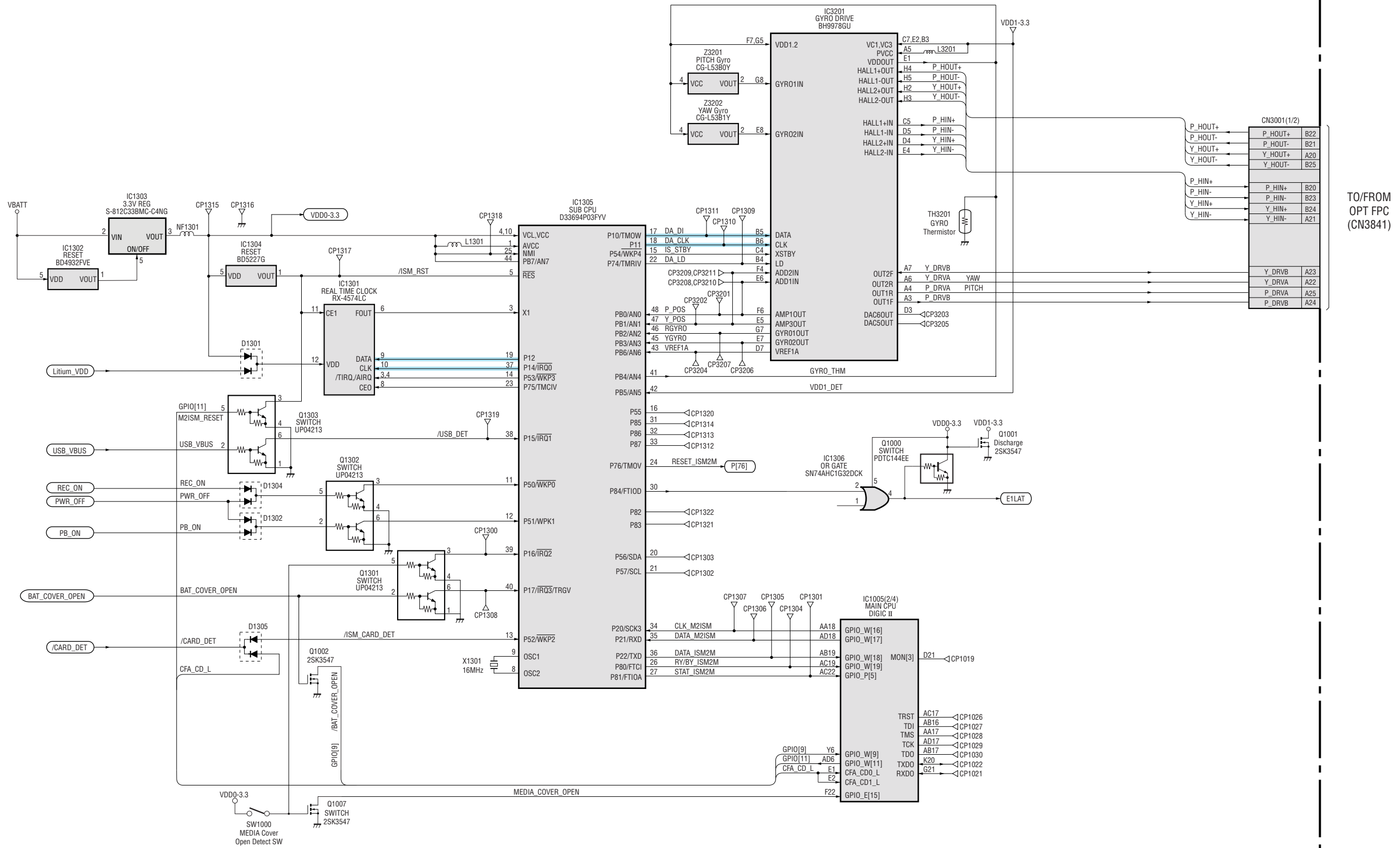


2.2 MAIN PCB ASS'Y (1/4)



2.3 MAIN PCB ASS'Y (2/4)

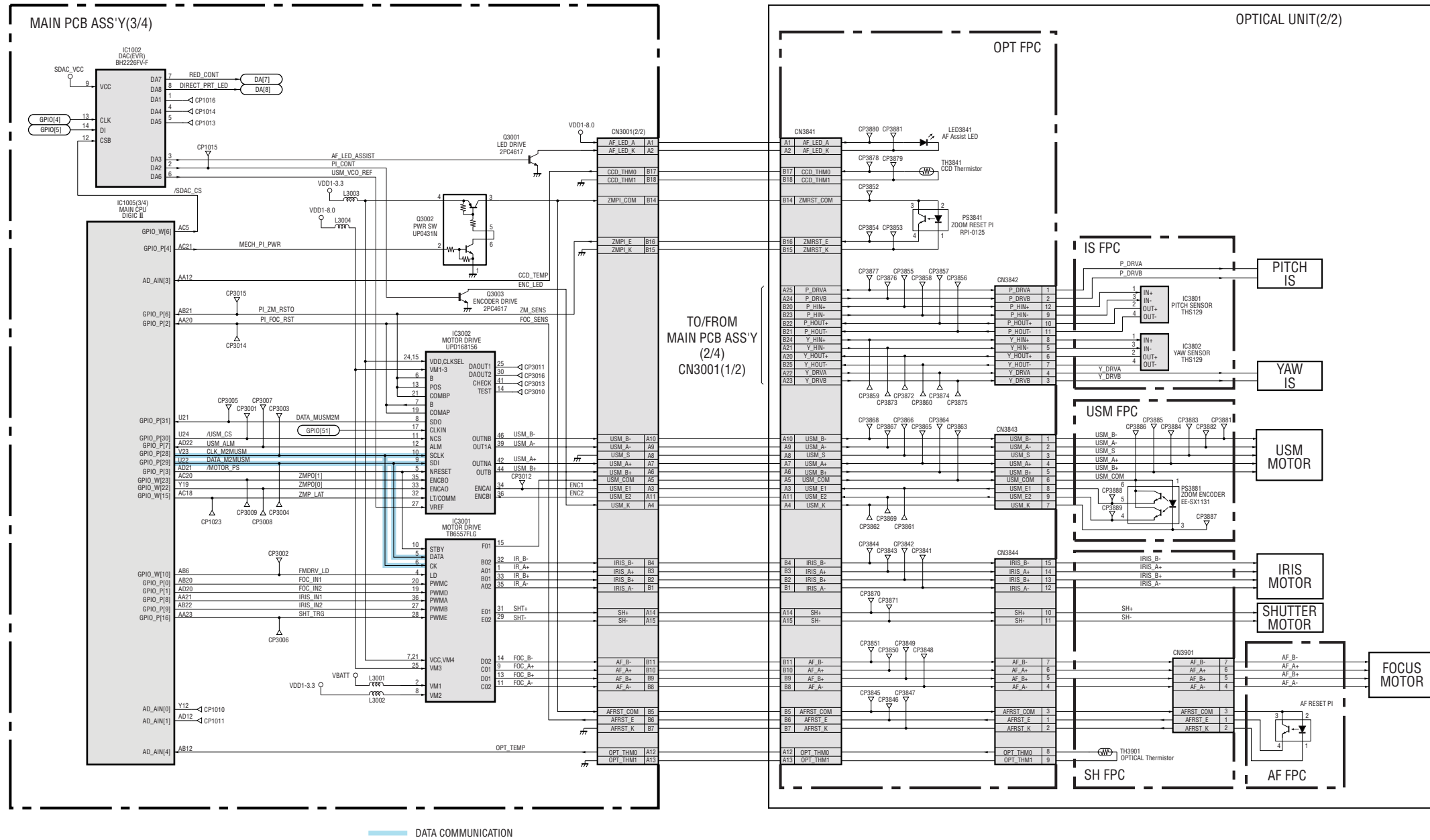
MAIN PCB ASS'Y(2/4)



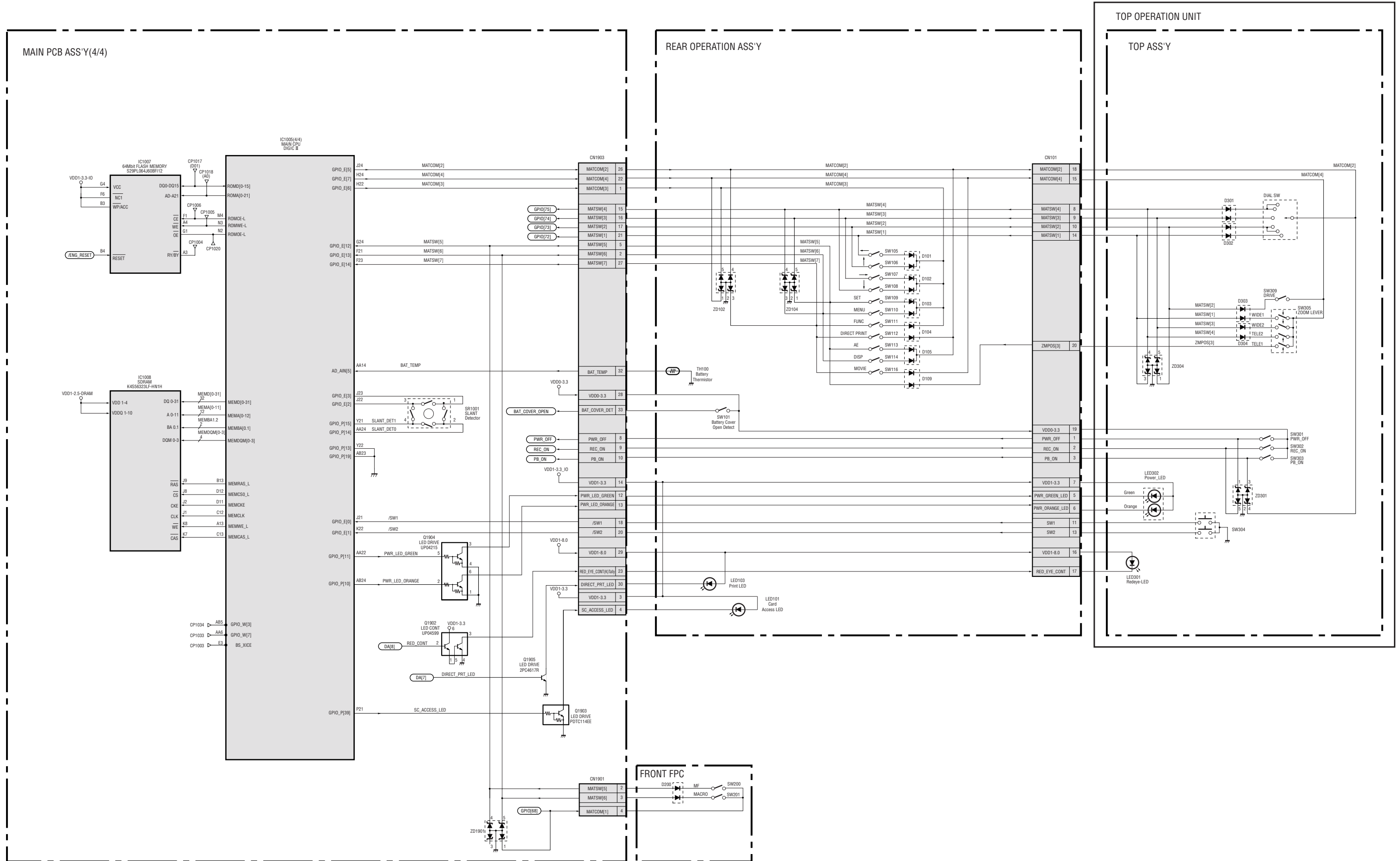
TO/FROM
OPT FPC
(CN3841)

DATA COMMUNICATION

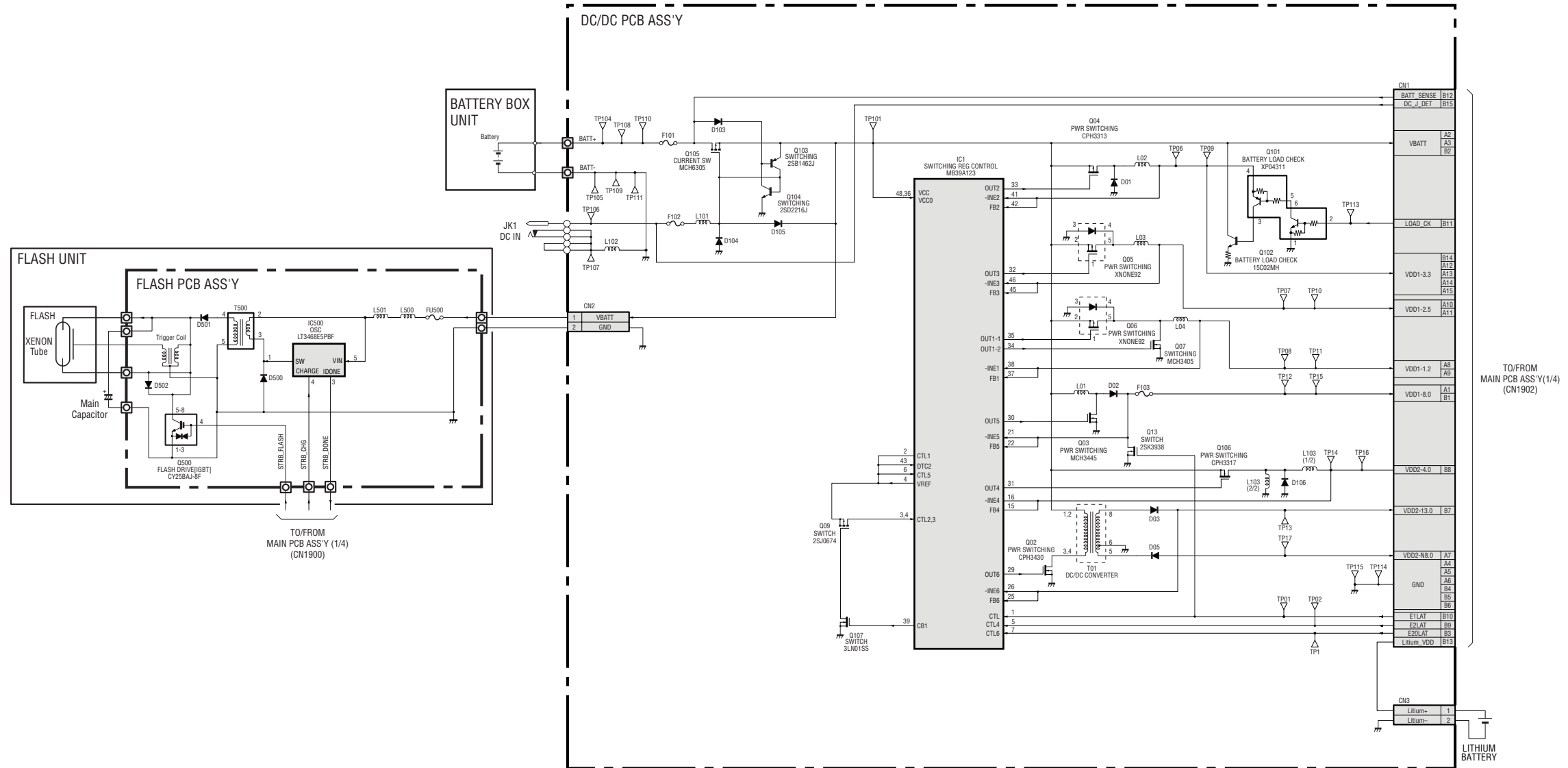
2.4 MAIN PCB ASS'Y (3/4)



2.5 MAIN PCB ASS'Y (4/4)



2.6 DC/DC PCB ASS'Y



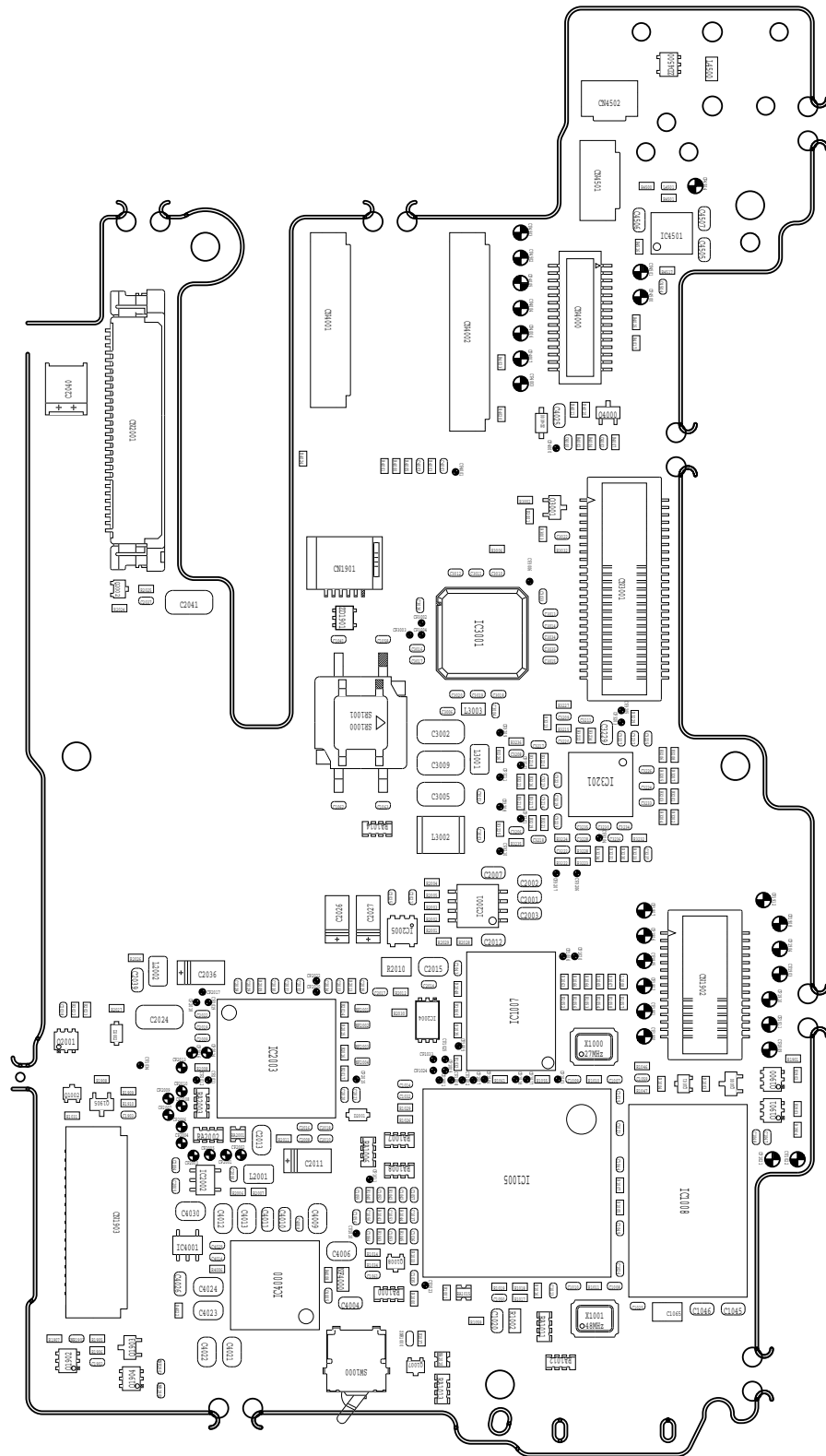
2.7 Abbreviation in Block Diagrams

Abbreviation	Nominal name	Description
ADC (A/D)	Analog-to-Digital Converter	
AE	Automatic Exposure control	
AF	Automatic Focussing control	
R-Y/B-Y		Color difference signals of TV system
BPF	Band-Pass Filter	
BUFFER	Buffer circuit	
C	Chrominance signal	Color component signal of TV system
CCD	Charge-Coupled Device	
CDS	Correlated Double Sampling system	
COMP.VIDEO	Composite video signal	
COMPARATOR	Voltage comparator	
CPU	Central Processing Unit	
DAC (D/A)	Digital-to-Analog Converter	
DRAM	Dynamic Random Access Memory	Memory with which read and write are freely possible.
DIP	Digital Imaging Processor	Processes the picture data
EEPROM	Electrically Erasable PROM	
EVF	Electronic View Finder	
FET	Field Effect Transistor	
FLASH MEMORY		Non-volatile memory with which write and read are freely possible.
HPF	High-Pass Filter	
I/F	InterFace	Interconnects 2 devices or circuits.
IGBT	Insulated Gate Bipolar Transistor	Conductivity-modulation type FET transistor
IR	InfraRed ray	
IRIS	Iris	
LCD	Liquid Crystal Device	
LED	Light Emitting Diode	
LPF	Low-Pass Filter	
NTSC	National Television System Committees	NTSC color TV system developed in USA
OP Amp	OPERational Amplifier	
OSC	OSCillator	
PAL	Phase Alternating by Line	PAL color TV system developed in Germany
PLL	Phase Locked Loop	
PROM	Programmable Read Only Memory	Non-volatile memory in which program can be written.
PWM	Pulse Width Modulation	
REG.	REGulated power supply	
RTC	Real Time Clock	Reference clock oscillator
SDRAM	Synchronous Dynamic RAM	DRAM whose bus interface is synchronous.
SW REG	SWitching REGulator	Switching type regulated power supply device
TG	Timing Generator	
USB	Universal Serial Bus	USB type serial data communication system
VCO	Voltage Controlled Oscillator	
VCXO	Voltage Controlled X'tal Oscillator	
XE	Xenon Tube	
Y	Y-signal	Luminance component signal of TV system

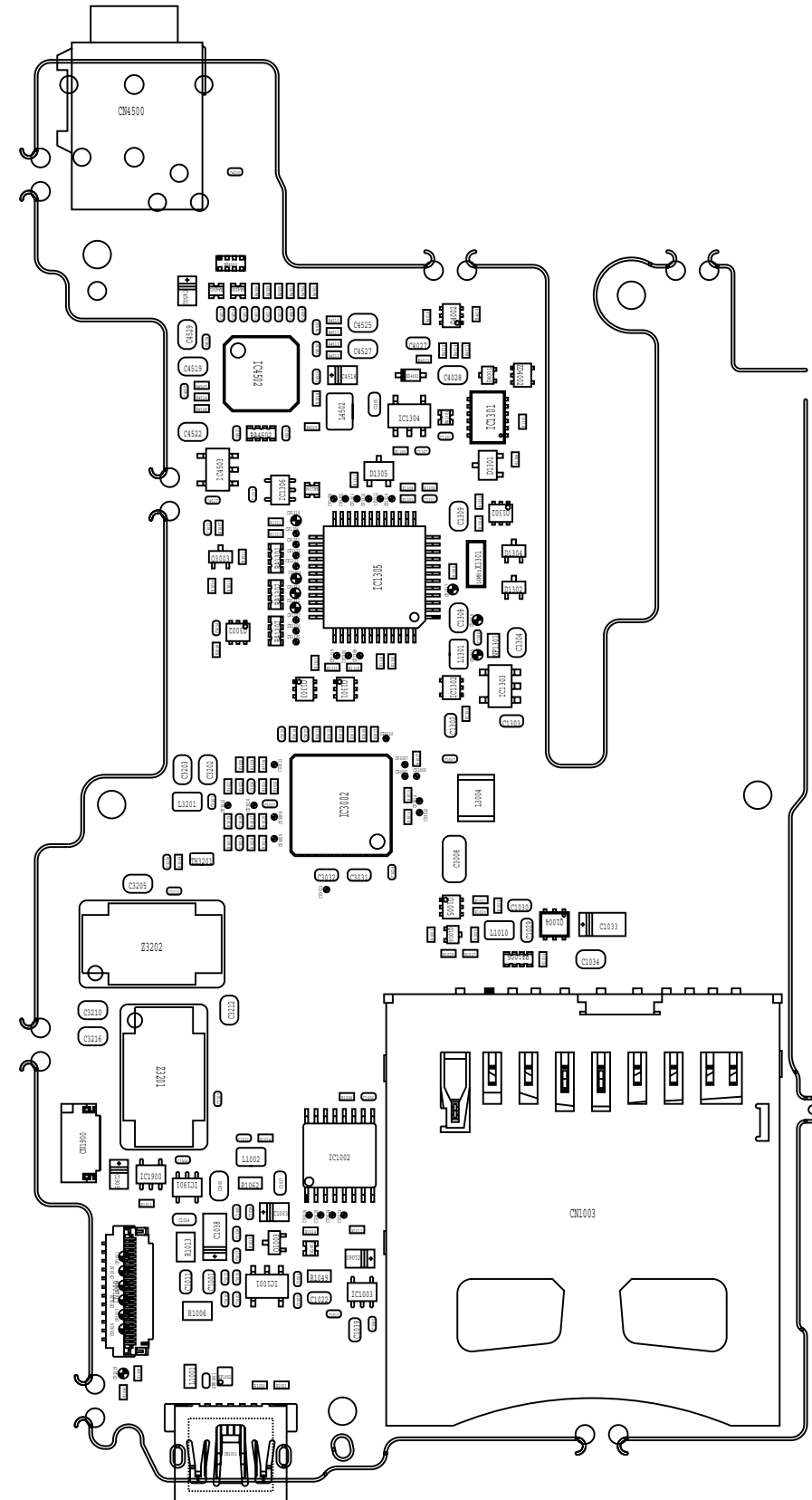
3. P.C.B. DIAGRAMS

3.1 MAIN PCB ASS'Y

MAIN PCB ASS'Y (Primary Side)

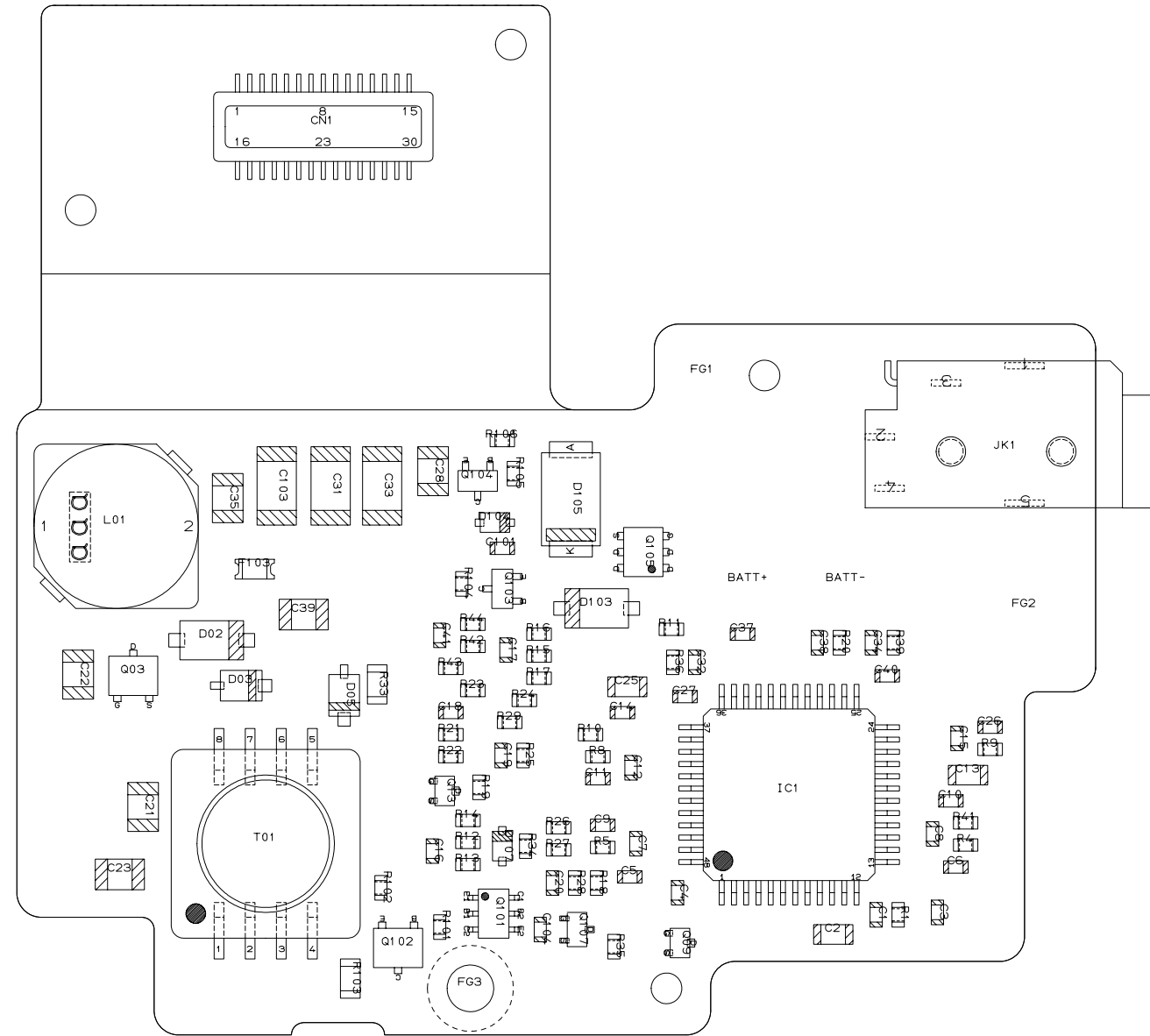


MAIN PCB ASS'Y (Secondary Side)

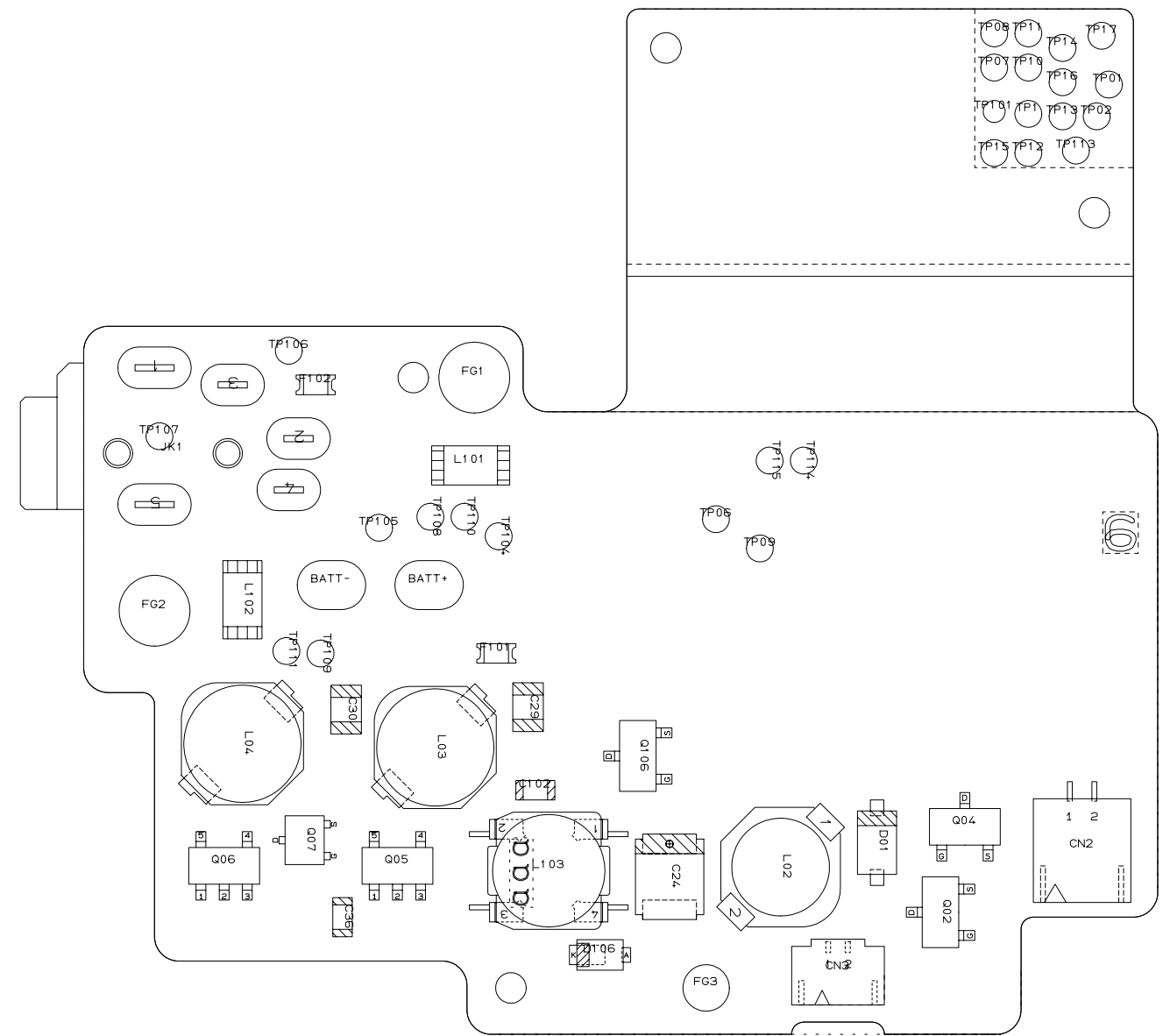


3.2 DC/DC PCB ASS'Y

DC/DC PCB ASS'Y (Primary Side)

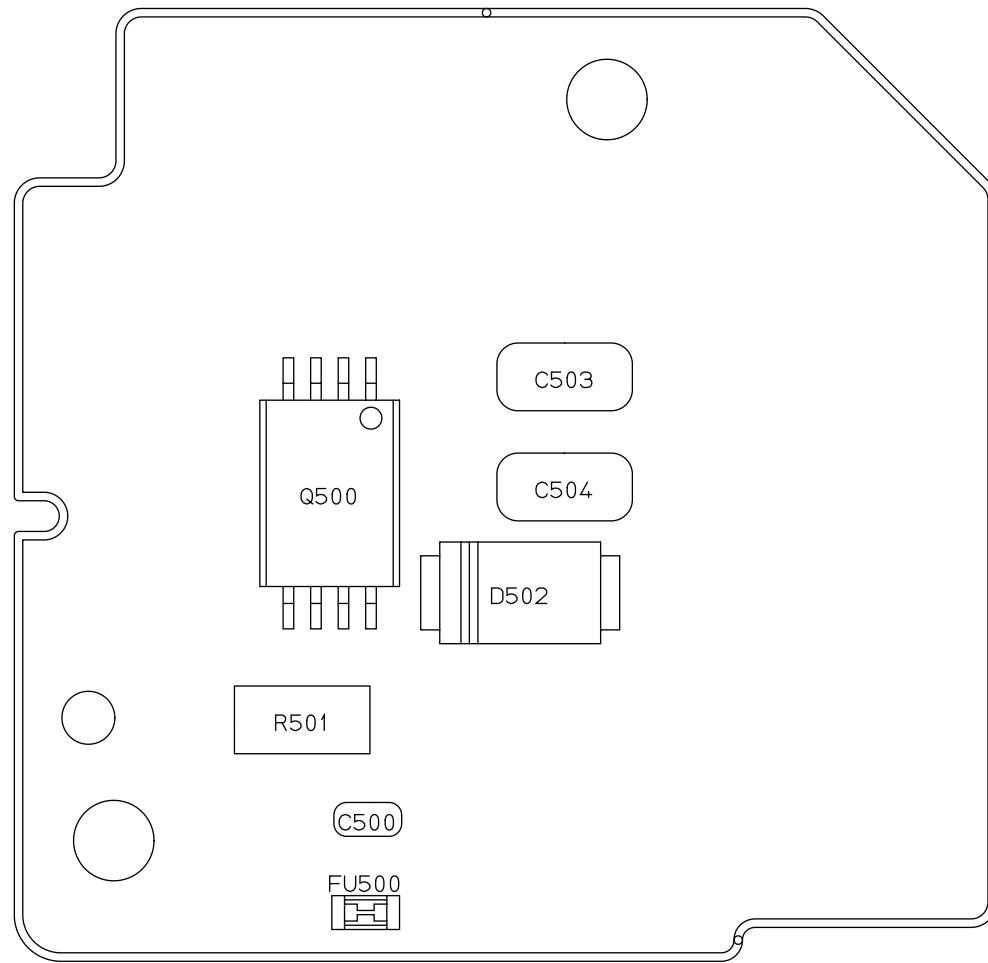


DC/DC PCB ASS'Y (Secondary Side)

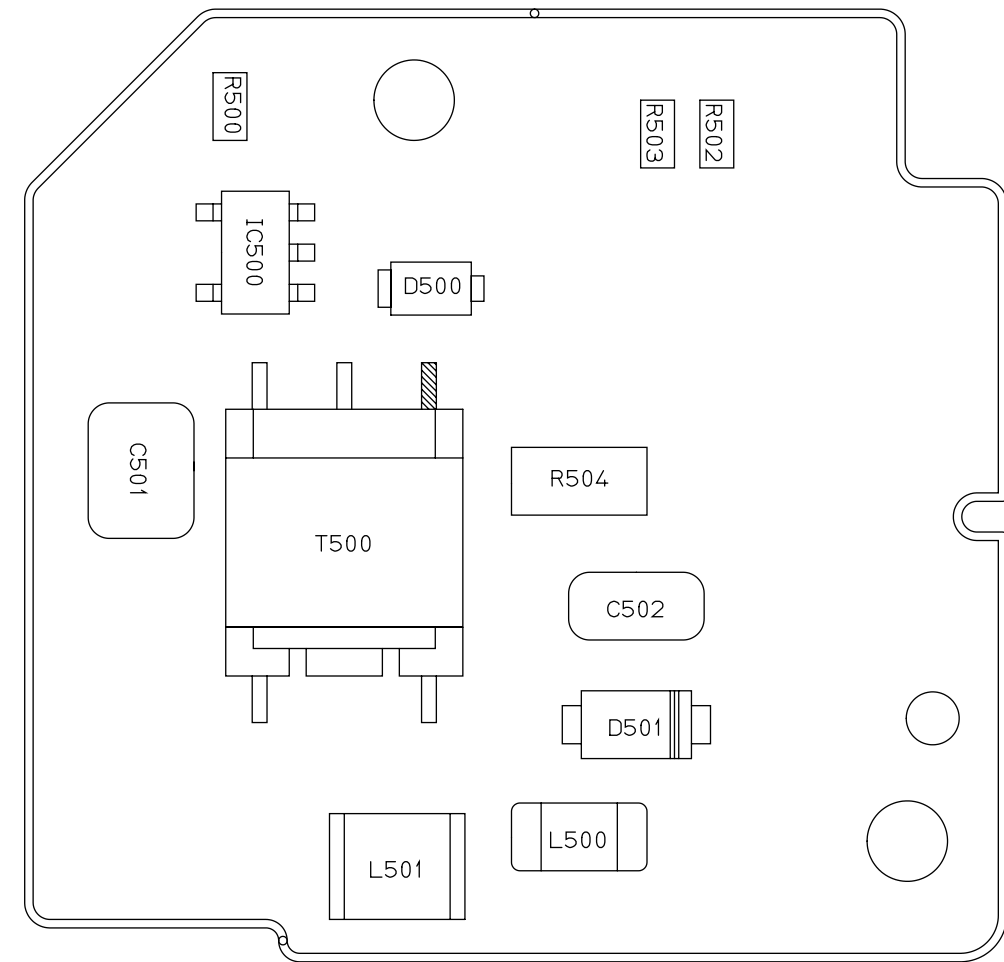


3.3 FLASH PCB ASS'Y

FLASH PCB ASS'Y (Primary Side)

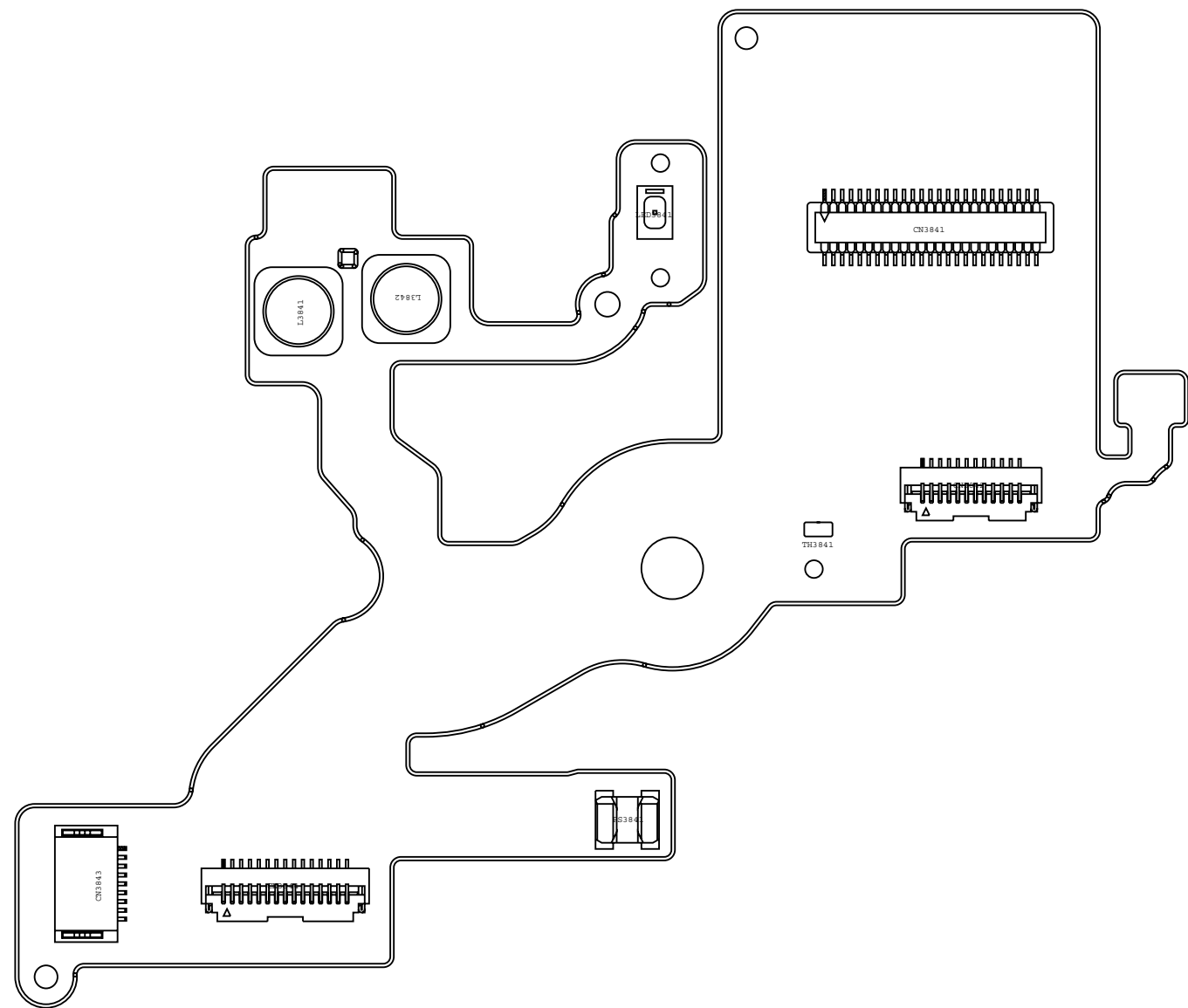


FLASH PCB ASS'Y (Secondary Side)

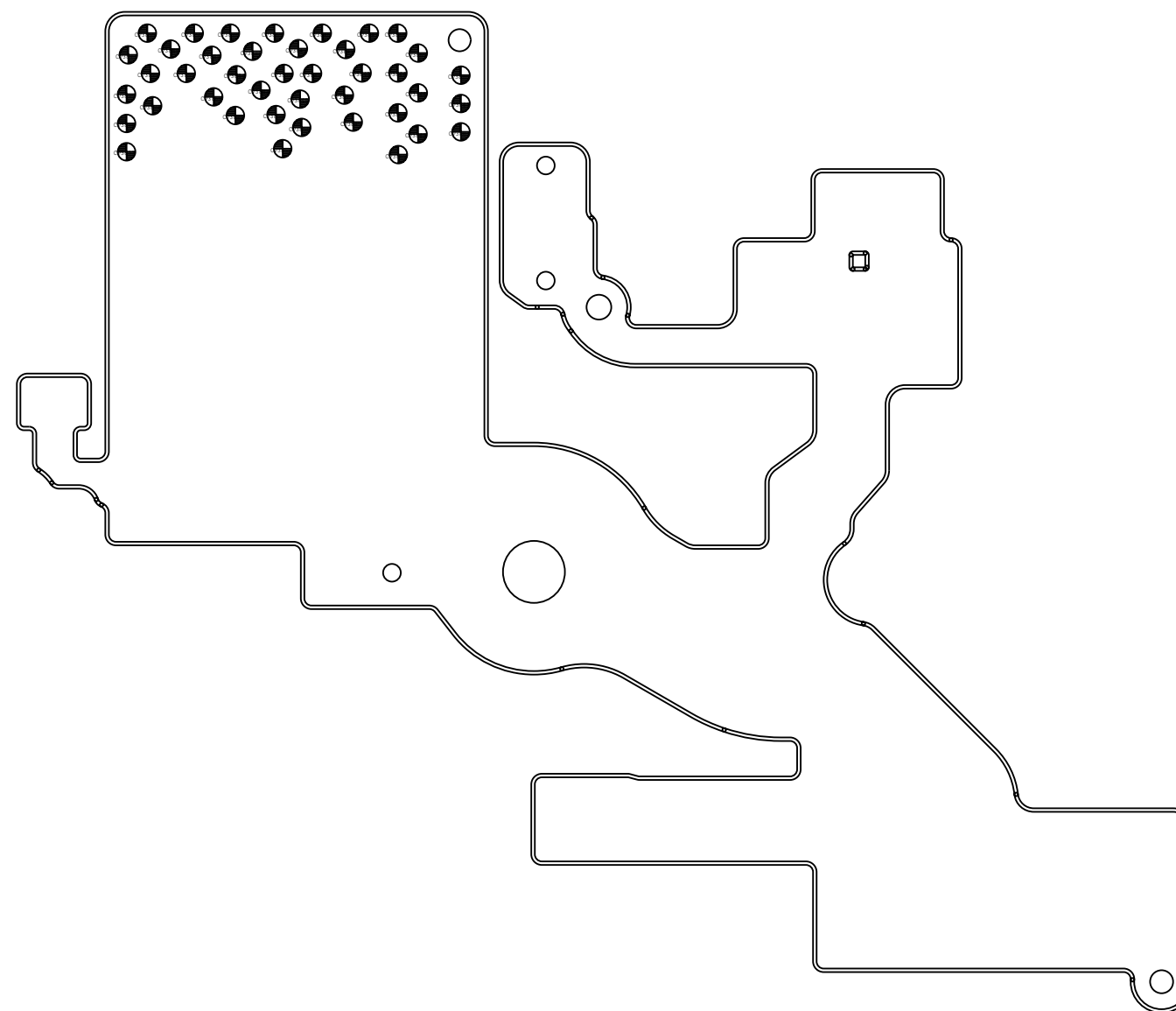


3.4 OPT FPC

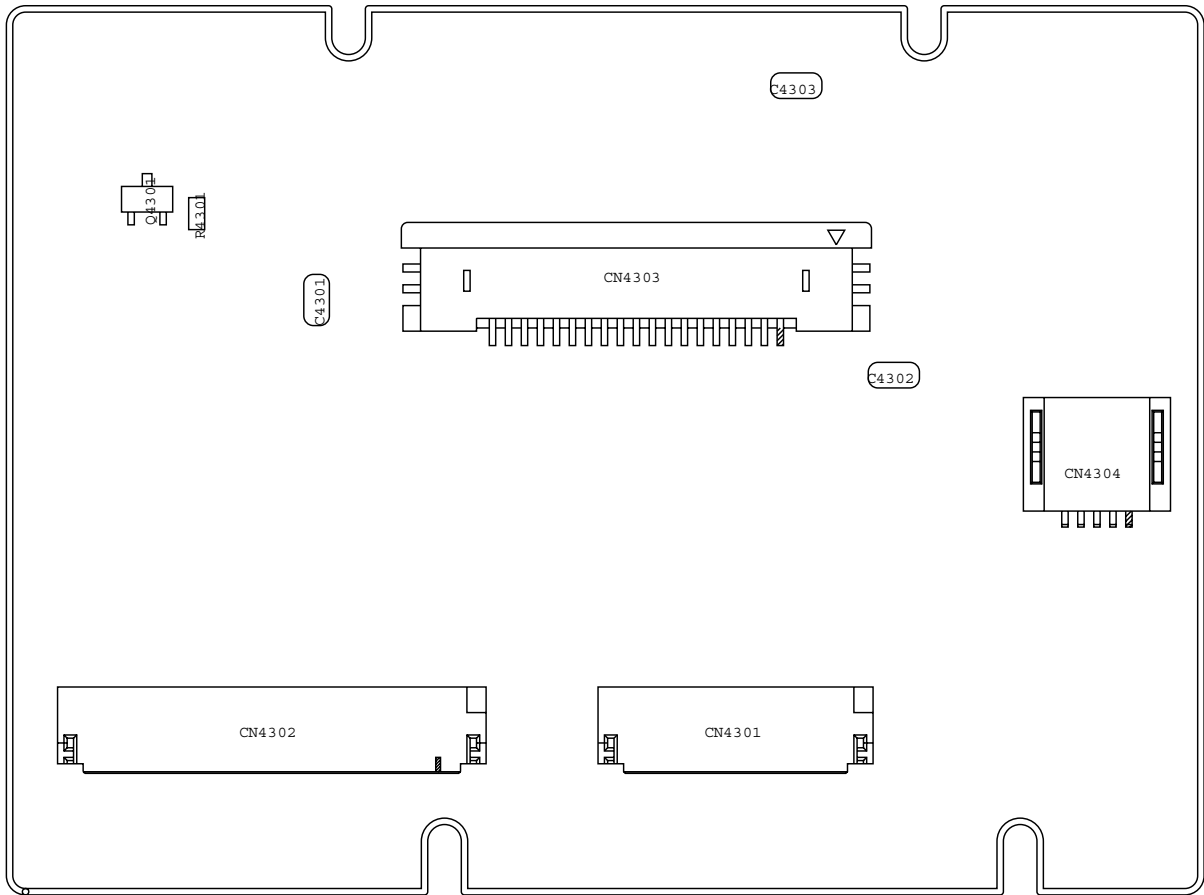
OPT FPC (Primary Side)



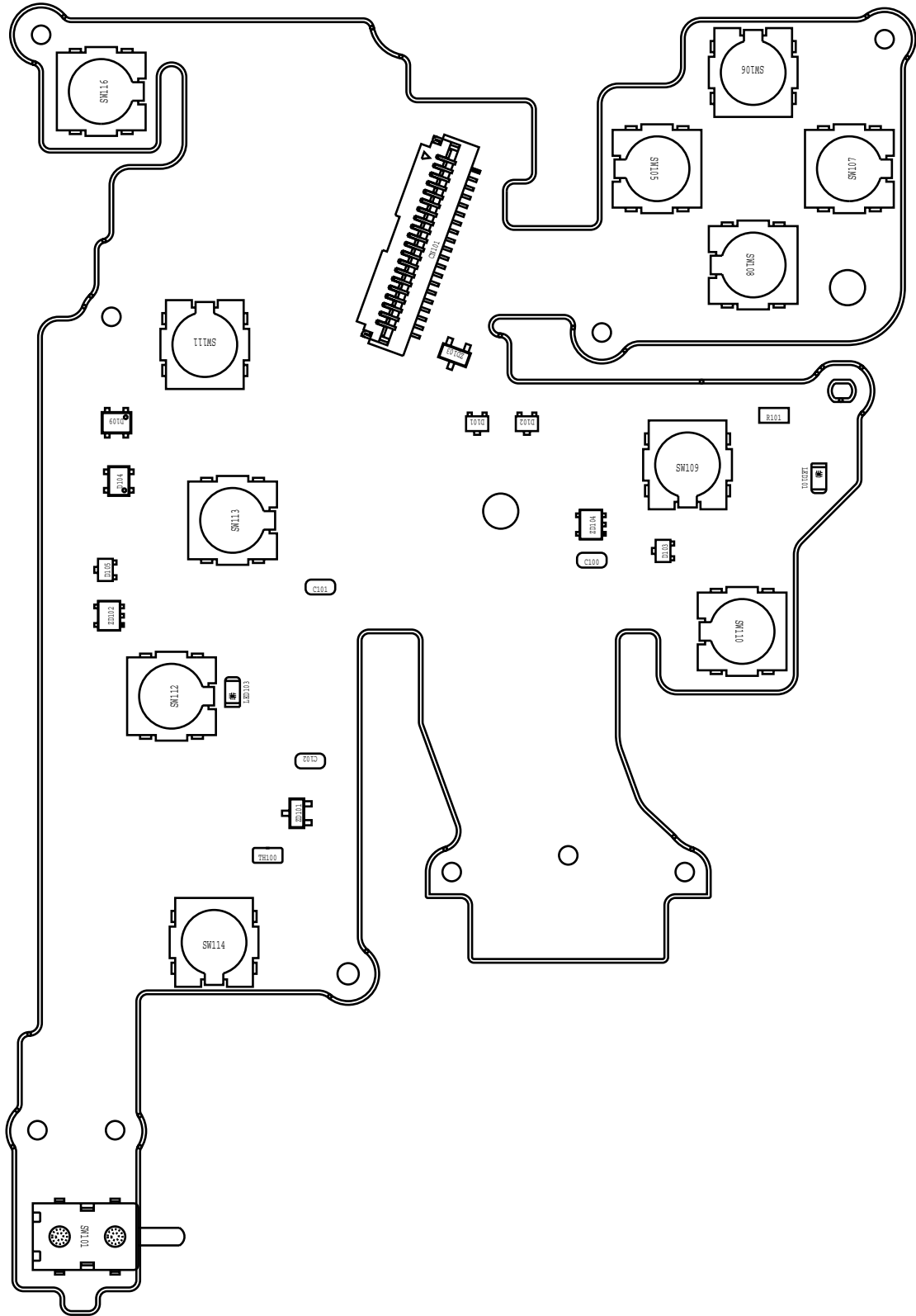
OPT FPC (Secondary Side)



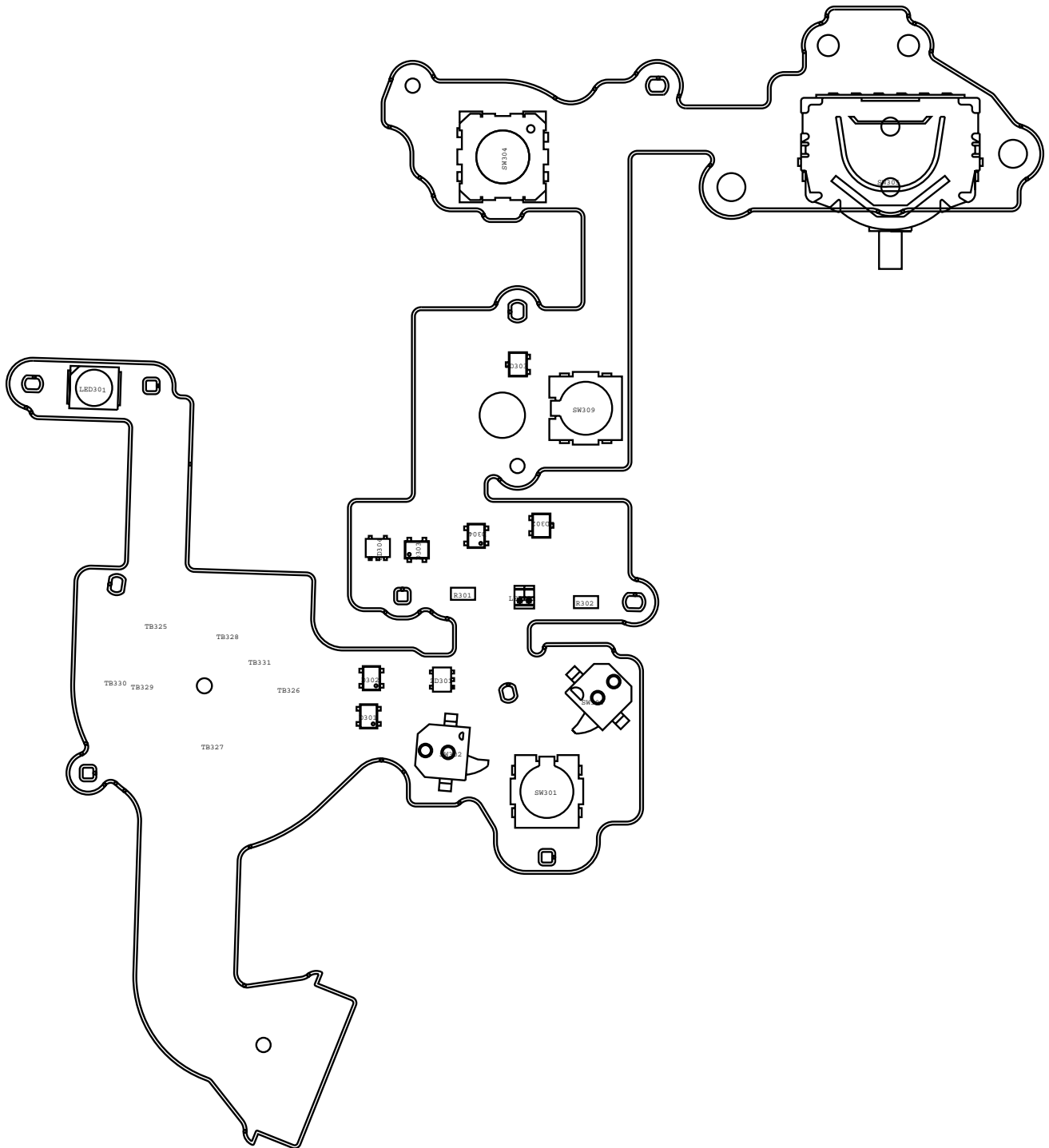
3.5 LCB PCB ASS'Y



3.6 REAR OPERATION ASS'Y



3.7 TOP ASS'Y



3.9 FRONT FPC

